

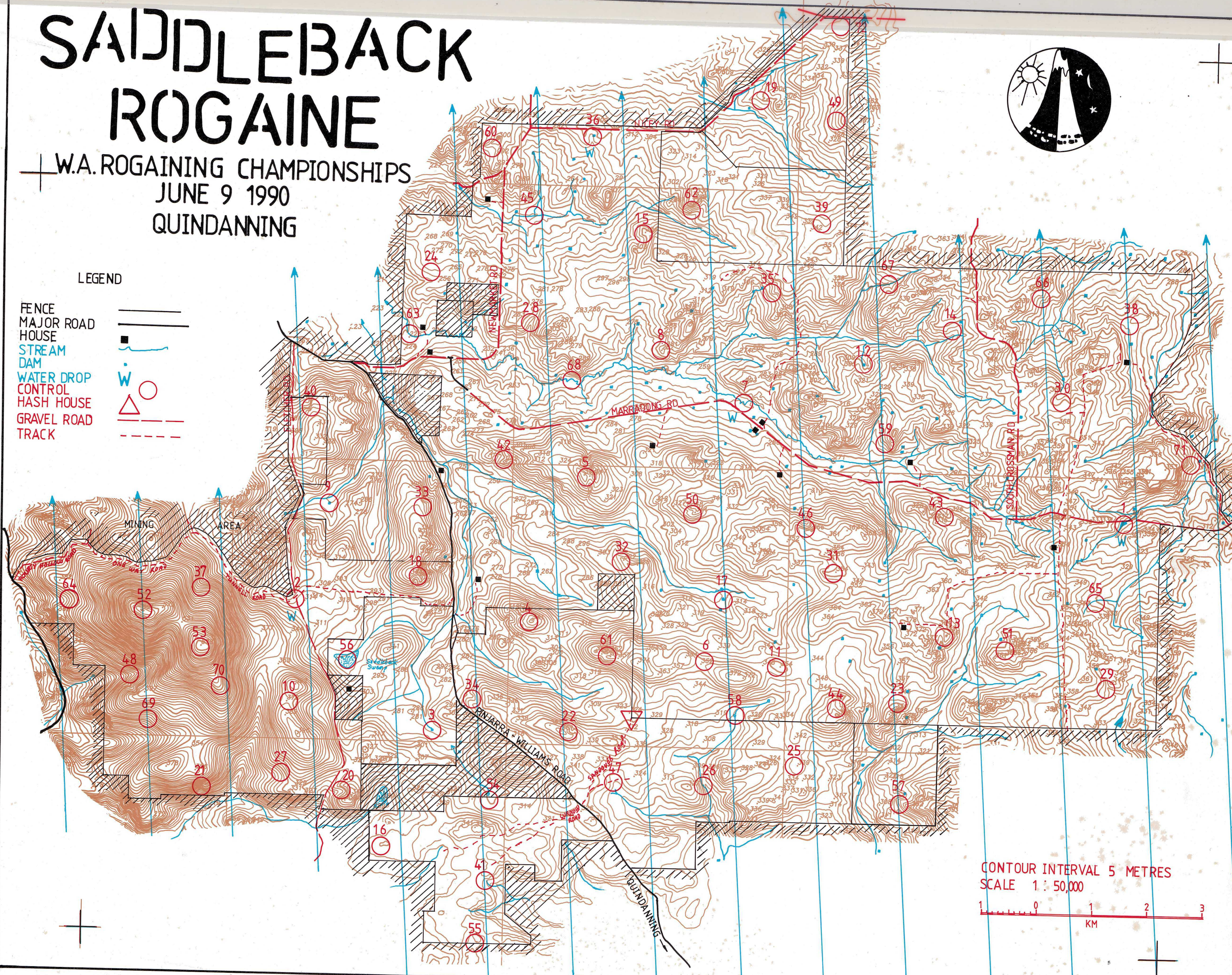
SADDLEBACK ROGAINE

W.A. ROGAINING CHAMPIONSHIPS
JUNE 9 1990
QUINDANNING



LEGEND

- FENCE
- MAJOR ROAD
- HOUSE
- STREAM
- DAM
- WATER DROP
- CONTROL
- HASH HOUSE
- GRAVEL ROAD
- TRACK



CONTOUR INTERVAL 5 METRES
SCALE 1 : 50,000



1	W	10	The dam foot
2	W	10	A gate - 150m at 90 degrees
3		10	The dam - west side
4		10	The summit
5		10	The saddle
6		10	A fence corner
7	W	20	The creek bend
8		20	A knoll
9		20	The dam
10		20	The saddle
11		20	The knoll
12		20	The gully
13		30	A knoll
14		30	A creek fence junction
15		30	A knoll
16		30	The knoll
17		30	The dam - N.E.corner
18		30	A knoll
19		40	Foot of a cliff
20		40	The gully
21		40	The gully
22		40	Head of the gully
23		40	The spur
24		40	A coppiced tree
25		50	The knoll
26		50	A track creek junction
27		50	The gully
28		50	The gully
29		50	The gully
30		50	A knoll
31		50	The spur
32		50	The spur
33		50	Top of the spur
34		50	The broad gully
35		50	The spur
36	W	50	A knoll

SADDLEBACK

37	60	The gully
38	60	A knoll - an antique shop
39	60	The broad gully
40	60	The gully
41	60	A rocky knoll
42	60	The spur
43	60	The gully
44	60	Head of the gully
45	60	The creek junction
46	60	Head of the gully
47	60	A gravel pit
48	60	The gully
49	70	The spur
50	70	A knoll
51	70	Foot of a cliff
52	70	A radio tower - 25m at 310 degrees
53	70	The summit
54	70	A shallow gully
55	80	The summit - on a firebreak
56	80	The marsh
57	80	The spur
58	80	The dam - S.W.corner
59	80	Head of the gully
60	80	Head of the gully
61	90	The knoll
62	90	A clearing - 50 x 50 N side
63	90	A bend in the creek
64	90	The gully
65	90	A creek junction - N side
66	90	Top of the small spur
67	100	A creek junction
68	100	The creek bend
69	100	A clearing - 100 x 70 N.W.edge
70	100	The spur
71	100	A knoll
72	100	A copse of trees on the broad spur